

# E Evaporators

## Yamato® Rotary Evaporator Systems

- ▶ Quality evaporators at the right price!
- ▶ Maximum performance and quality control are ensured
- ▶ Self-diagnostic function ensures safe and continuous operation
- ▶ Customize to suit your needs with interchangeable components

Complete evaporator systems take the guesswork out of ordering. All systems include rotary evaporator, water bath, and standard diagonal condenser set.

**Rotary Evaporators** feature a brushless, sparkless high-torque motor for constant rotation. All evaporators come with a 5-ft cord with three-prong plug for 115 VAC operation.

**Water Baths** operate from 5°C above ambient to 95°C. Temperature control accuracy is ±2°C. Special safety feature shuts off heater if water level drops below heater coil. All baths include 6-ft cord with three-prong plug for 115 VAC operation.

**Standard Diagonal Condenser Glassware Set** includes 1-liter pear shaped evaporating flask, 1-liter round bottom receiving flask, standard condenser, long inlet feed tube and stopcock, steam duct, and clamps. Vacuum port is 1/8" OD.



**Economical rotary evaporator system 28620-01 with optional refrigerant condenser set and four-way connector**

### **A** Economical Rotary Evaporator System

Perform a variety of applications from distillation to freeze drying.

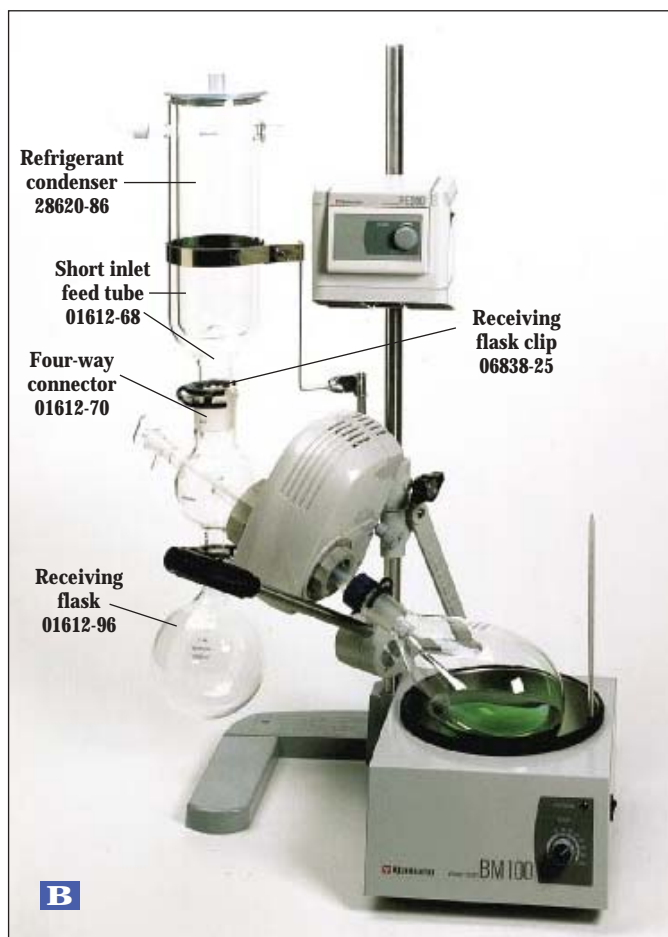
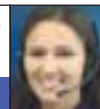
**What's included:** rotary evaporator, 3.7-liter water bath with analog control, standard diagonal condenser glassware set, and thermometer.

**A-28620-01** Economical rotary evaporator system

**A-01611-80** Quick-action jack adjusts height of glassware above the bath

Call our Application Specialists for assistance in selecting the evaporator system best suited to your application.

**800-323-4340**



**Standard rotary evaporator system 28620-11 with mechanical lift and standard diagonal condenser**

### **B** Standard Rotary Evaporator Systems with Mechanical Lift

Adjust the height of the motor or glassware with a simple turn of the dial. Bath features an insulated shield ring to help prevent glassware breakage. Digital model 28620-11 features a central control panel for greater accuracy and control—the green LED display indicates flask rotation speed.

**What's included:** rotary evaporator, 7-liter water bath with analog control, standard diagonal condenser glassware set, mechanical lift, and thermometer.

**A-28620-16** Analog rotary evaporator system with mechanical lift

**A-28620-11** Digital rotary evaporator system with mechanical lift



Digital rotary evaporator system with digital water bath and motorized lift shown with optional vertical condenser (28620-85) and four-way connector (01612-70)

### **C** Digital Rotary Evaporator System With Motorized Lift

Motorized lift lets you gently raise and lower the flask into the water bath with the touch of a button. Digital water bath lets you enter temperature set point via keypad control and view results on the control panel LED display. Bath also features an insulated shield ring to help prevent glassware breakage.

**What's included:** digital rotary evaporator, 7-liter water bath with digital control, standard diagonal condenser glassware set, motorized lift, and thermometer.

**A-28620-21** Digital rotary evaporator system with motorized lift

#### Vacuum pumps...

See our "Vacuum/Pressure Pumps" section on pages 1972-1994.

### Replacement Glassware for Yamato Evaporators

**A-28620-84** Standard condenser.

For general-purpose work

**A-01612-90** Pear-shaped evaporating flask,

1 liter. Taper joint size 24/40

**A-01612-96** Round bottom receiving flask,

1 liter. Ball joint size 35/20

**A-01612-67** Long inlet feed tube

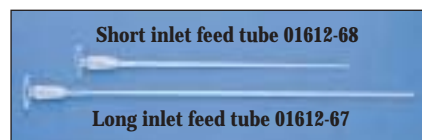
for standard condenser setup



Standard condenser 28620-84



Vertical condenser 28620-85



### Optional Glassware for Yamato Evaporators

**A-28620-85** Vertical condenser.

For fast distillation of solvents with high boiling points

**A-28620-86** Refrigerant condenser.

For volatile solvents or freeze drying

**A-01612-91** Pear-shaped evaporating flask,

2 liter. Taper joint size 24/40

**A-01612-97** Round bottom receiving flask,

2 liter. Ball joint size 35/20

**A-01612-70** Four-way connector

for use with vertical and refrigerant setups

**A-01612-68** Short inlet feed tube

for vertical and refrigerant condenser setups

### Accessories for Yamato Evaporators

**A-01578-08** Transformer for 230 VAC operation, 1000 watts.

For use with all evaporators and water bath BM100.

Shpg wt 15 lb (6.9 kg)

**A-01578-09** Transformer for 230 VAC operation, 1500 watts.

For use with all evaporators and water baths BM200 and BM400.

Shpg wt 19 lb (8.7 kg)

**A-28620-83** Transformer adapter

**A-06840-15** Evaporating flask clips. Pack of 12

**A-06838-25** Receiving flask clips. Pack of 12

**A-01612-89** Glass joint adapter. Adapt other

manufacturer's flasks. Joint size 29/42

**A-17780-02** Joint grease, -40 to 200°C.

Silicone-free, clear

**A-17780-12** High-temp joint grease, -40 to 320°C.

Silicone-free, brown

**A-28620-81** Vacuum seal, fluoroelastomer

### Specifications for Evaporators

	Evaporation flask size: 100 mL to 2 L, (1-L flask included)		Overcurrent protection: yes	
	Resolution: 1 rpm		Vacuum seal: fluoroelastomer	
	Glass joint: adjustable 24/40 steam duct		Power: 115 VAC, 50/60 Hz	
Model number	<b>A</b> 28620-01	<b>B</b> 28620-16	<b>B</b> 28620-11	<b>C</b> 28620-21
Digital display	No	No	Yes	Yes
Lift mechanism	Manual arm/support jack		Motorized	
Sensors	—		Heater, motor, and battery	
Watts	805 W	1380 W	1380 W	1495 W
Dimensions	16½"W x 33"H x 11½"D		16½"W x 22¾"H x 13½"D	
Shpg wt	44 lb (20.0 kg)	38 lb (17.2kg)	36 lb (16.4 kg)	61 lb (27.7 kg)